

# Loch Lomond

Scottish Folk Song

A7 D G/D A7/D

By yon bon - nie banks, and by yon bon - nie braes, Where the  
'Twas there that we part - ed in yon sha - dy glen, On the  
The wee bir - dies sing and the wild flow - ers spring, And in

D Bm D7/A G A F#m

sun shines bright on Loch Lo - mond, Where  
steep, steep side o' Ben Lo - mond, Where  
sun - shine the wa - ters are sleep - in', But the

Bm F#m/A Em7 F#m7 G A7

me and my true love Were ev - er wont to gae On the  
in pur - ple hue The Hie - land hills we view, And the  
bro - ken heart it kens Nae sec - ond Spring a - gain, Tho' the

Bm D7/A G D/F# A D A7

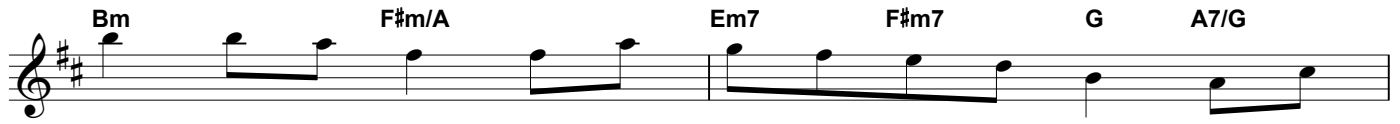
bon - nie, bon - nie banks of Loch Lo - mond }  
moon com - ing out in the gloam - ing. Oh  
wae - fu' may cease frae their greet - in' }

D Bm F#m G Em7 A7

ye'll tak' the high - road and I'll tak' the low - road, And

D/F# Em7 D G F#m

I'll be in Scot - land a - fore ye, But



me and my true love will nev - er meet a - gain On the



bon - nie, bon - nie banks of Loch Lo - mond \_\_\_\_\_